

Technology/Youth

- ◆ Garland Hayward Youth Center

Contact: Krystal Perkins, 410-651-2668

Age Accepted: 15+ Volunteer as a classroom assistant and mentor in an after school program.

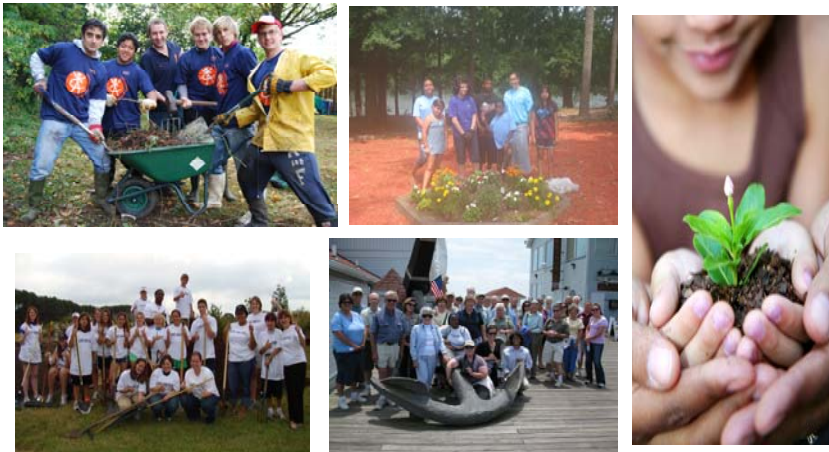
- ◆ Wicomico County Public Library, Centre Branch

Contact: Stephanie Ewell, 410-546-5397

Age Accepted: 13-17 Provide staff support and learn technologies, social and leadership skills.



**VOLUNTEERING IS GOOD FOR THE
HEART AND THE SOUL.**



Serving the Tri-County Area



A TEEN'S GUIDE TO VOLUNTEERING



ShoreCAN

Volunteer Center

Volunteering builds leadership skills, social networking experiences and self esteem.

Take time to serve in your local community today. There are many non-profit agencies in your area that have youth volunteer opportunities.

Contact the ShoreCAN Volunteer Center today!



1324 BELMONT AVENUE, SUITE 401

SALISBURY, MD 21804

410-742-9911

WWW.SHORECAN.ORG



Environmental

- ◆ Coast Kids (Assateague Coastal Trust)

Contact: Verena Chase, 410-629-1538

Age Accepted: 15+ Assist Coast Kid's staff as they host monthly events such as bird banding, canoeing and building bird houses.

- ◆ Lower Shore Land Trust

Contact: Krista Hozyash, 410-641-4467

Age Accepted: 15+ Assist with public events and other programs in Worcester County.

- ◆ Salisbury Zoo Education Department

Contact: salisburyzooed@gmail.com

Age Accepted: 14+ Volunteer as a docent and help to expand education programs.



Animal Rescue/Service

- ◆ Horse Lovers United

Contact: Lorraine Truitt, 410-716-3599

Age Accepted: 16+ Assist staff in caring for displaced horses by feeding them, cleaning out their stalls, and freshening up their water.

- ◆ 4Steps Therapeutic Riding Program

Contact: Sandy Winter, 410-835-8814

Age Accepted: 15+ Work with staff at this therapeutic riding farm to enhance disabled clients lives and also provide care for the horses.

Medical/Healthcare

- ◆ Deer's Head Hospital Center

Contact: Helen Young, 410-543-4052

Age Accepted: 16+ Provide patient and staff support at the hospital.

- ◆ Peninsula Regional Medical Center

Contact: Mary Kiley, 410-543-7284

Age Accepted: 14+ Provide patient and staff support at the hospital.



Historical Preservation

- ◆ Pemberton Historical Park

Contact: Kerri Liming, 410-860-2447

Age Accepted: 12+ Provide staff support during special events (nature trails and hikes).

- ◆ Friends of Poplar Hill Mansion

Contact: Nancy Marasco, 410--749-1776

Age Accepted: 15+ Volunteer as a museum docent and help staff expand education programs.

- ◆ Ward Museum

Contact: Renee Fredrickson, 410-742+4988

Age Accepted: 14+ Volunteer as a museum docent.